

FSCD PARIS 2019

UNIVERSITÉ PARIS 13, SORBONNE PARIS CITÉ

Paris 2019

FSCD

- * **FSCD main conference (4 days)**

Mon 1 - Tue 4 July
(or Mon 17 - Tue 20 June)

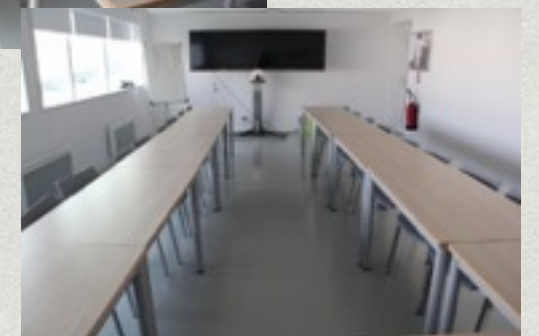


- * **Workshops (1+2 days)**

- * **Pre workshops: Sun 30 June**
(or Sun 16 June)

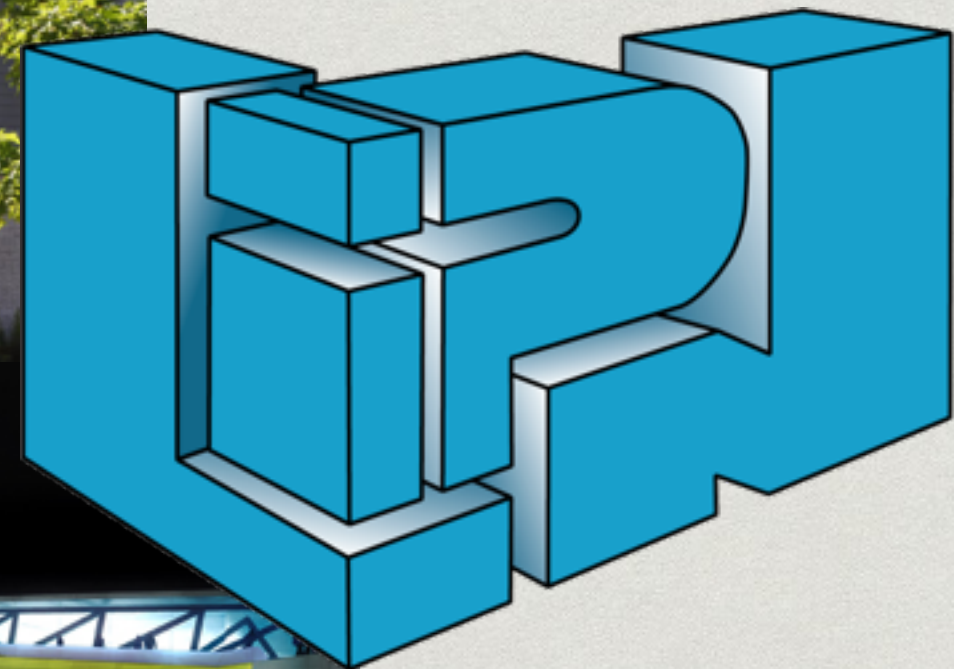


- * **Post workshops: Fry 5 - Sat 6 July**
(or 21-22 June)





UNIVERSITÉ **PARIS 13**



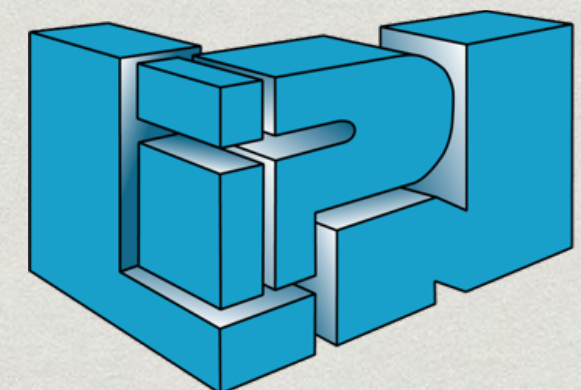
Université Paris 13, Sorbonne Paris Cité

Organisation: **LIPN, Institut Galilée**

Venue: **Maison des Science de l'Homme (MSH) Paris Nord**

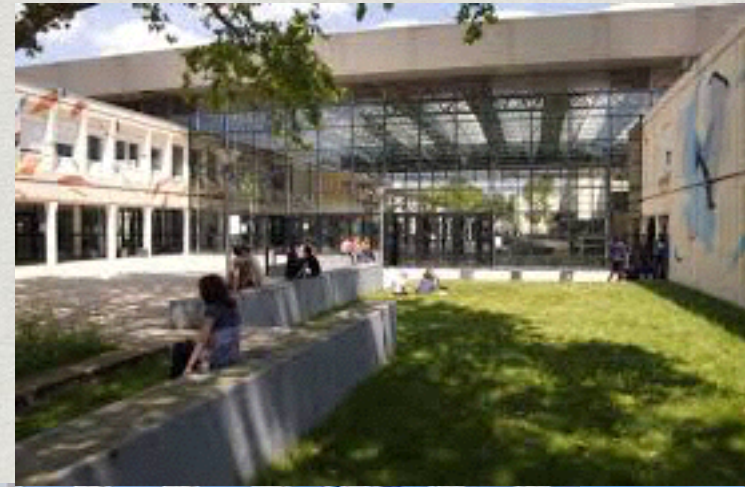
Local organisation

- * Local organisers
 - * **Stefano Guerrini**, *Conference Chair*
 - * **Giulio Manzonetto**, *Workshop Chair*
- * Support
 - * **LIPN**: website, administratif staff
 - * **CNRS**: registration site
 - * **Institut Galilée**: administratif staff



UNIVERSITÉ PARIS 13

- * One of the thirteen universities created after old Sorbonne reorganisation in 1968.
 - * 5 campus
 - * 23 000 students
 - * 5 faculties, 3 IUT, 1 engineering schools
 - * degrees and continuing education
- * Multi-disciplinary



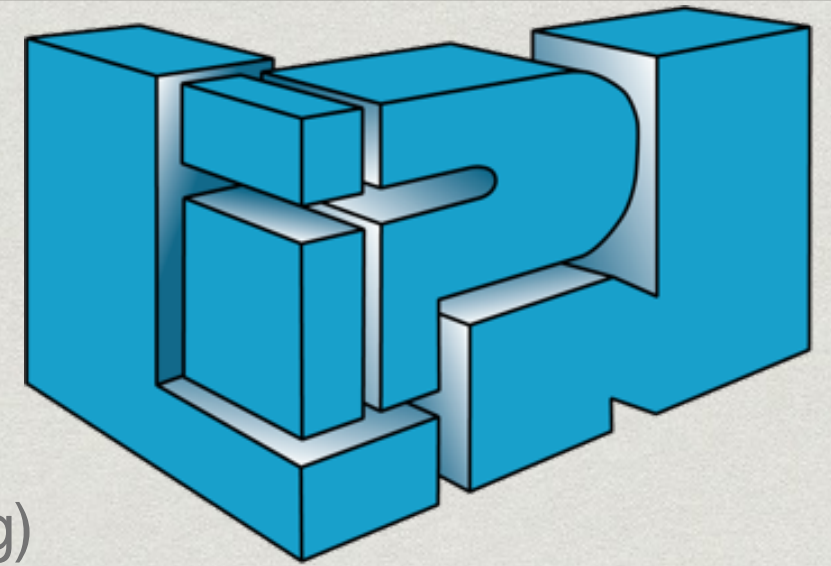
**A major center of teaching and research
in the north of Paris**

Institut Galilée

- * **Licence, Master, Engineering school, Doctorate**
- * **Faculty of Sciences**
 - * Mathematics
 - * Computer Science
 - * Physics
 - * Chemistry
- * **7 Research Laboratories**



LoVe LIPN



- * **LoVe (Logic and Verification)** team
formerly LCR (Logic, Computation and Reasoning)
 - * 24 permanent researchers (*enseignants-chercheurs* or *chercheurs*)
 - * 15 PhD students
- * Two main research areas:
 - * specification and verification
 - * logics, theory of computation, and programming languages
- * **LIPN (*Laboratoire d'Informatique Paris NORD*)**
Created in 1987: it is 31 years old!
 - * 4 research teams:
 - * CALIN (combinatorics)
 - * AOC (operational research and distributed computation)
 - * RCLN (computational linguistics)
 - * A3: machine learning



The venue



- * **MSH Paris Nord**

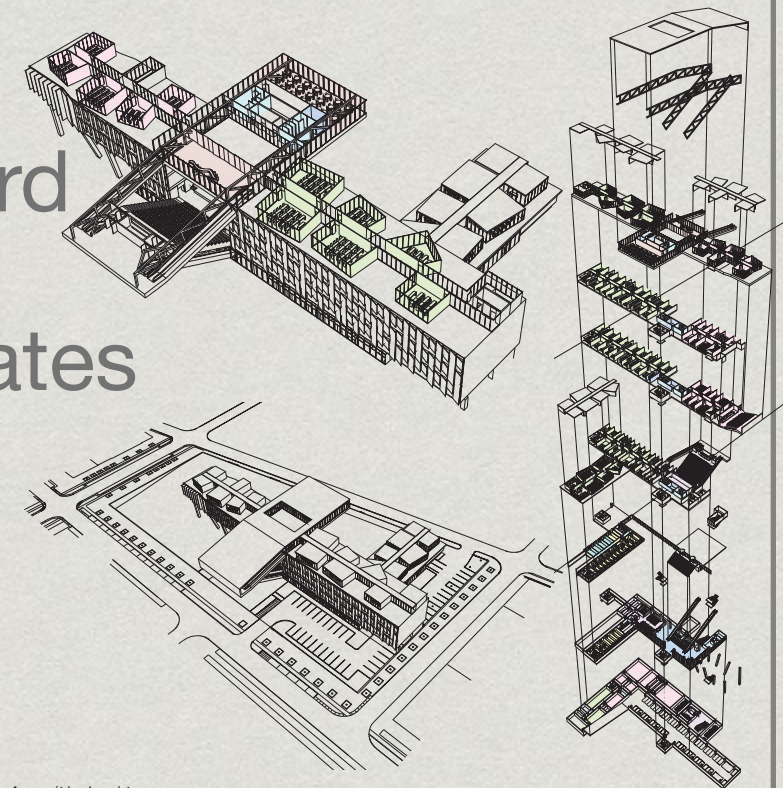
Maison des Sciences de l'Homme Paris Nord

- * It hosts, supports, promotes, and disseminates research in the social and human sciences.

- * The first major facility on the new **Condorcet Campus.**

- * Paris 8 and 13 Universities and CNRS

- * A new building completed in spring 2015



The area

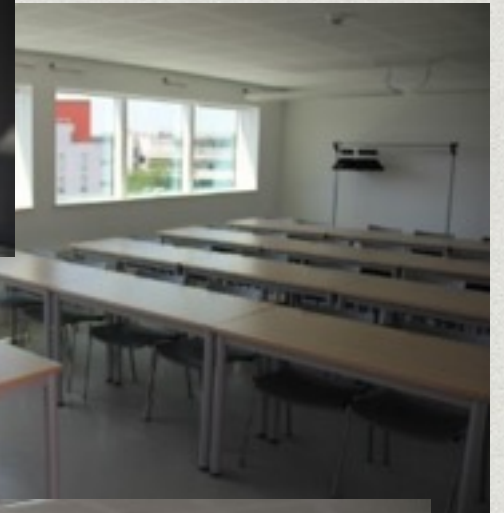


- ✦ **La Plaine Saint Denis:** strong urban renovation and development.
- ✦ **Campus Condorcet:** a new-multi university campus for humanities



Facilities

- * **1 Auditorium (300 p.)**
- * **1 Theatre (140 p.)**
- * **Conference rooms**
- * **Meeting rooms**
- * Possibility to **video record/stream** main events



Transports to/from Paris

- * Two main **international airports**
(*Charles de Gaulle et Orly, 40-50 min. from center Paris*)
- * One **low cost flights** airport
(*Beauvais, 2 h. from center Paris*)
- * **Fast train connections** to
central Europe and UK
(*Amsterdam, Brussels, Germany, London, etc.*)



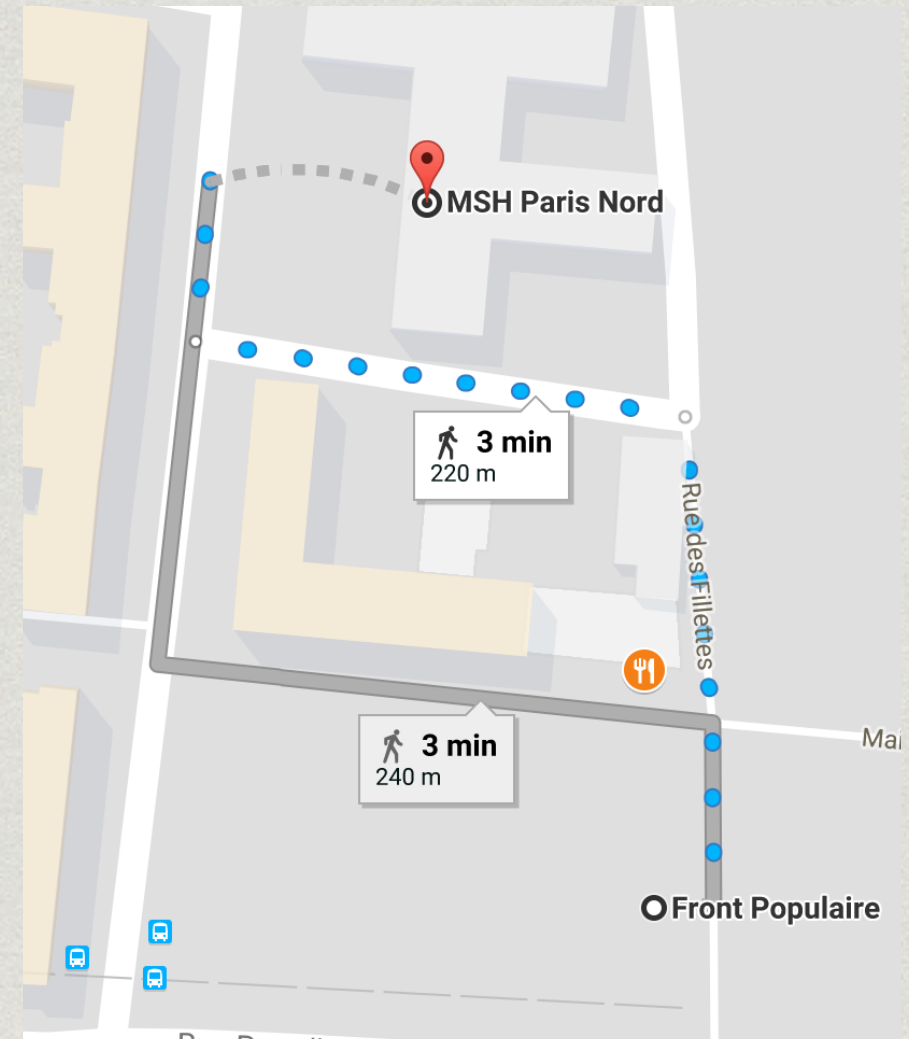
Public transports in Paris

- * 14 **Paris Metro** lines
- * 5 **RER** lines (Ile-de France)
- * 9 **tramway** lines
- * Extensive **bus** network
- * 1800 **bike sharing** stations



Public transports to/from MSH

- * Paris **Metro 12** station
Front Populaire
(240 m., 3 min.)
 - * direct connections to:
Gare Saint Lazare (20 min.),
Place de la Concorde (23 min.)
- * **Bus stops: 139, 239**
 - * connecting to:
Porte de la Villette,
Stade de France,
St. Denis
- * **22 min. to Châtelet-Les Halles**

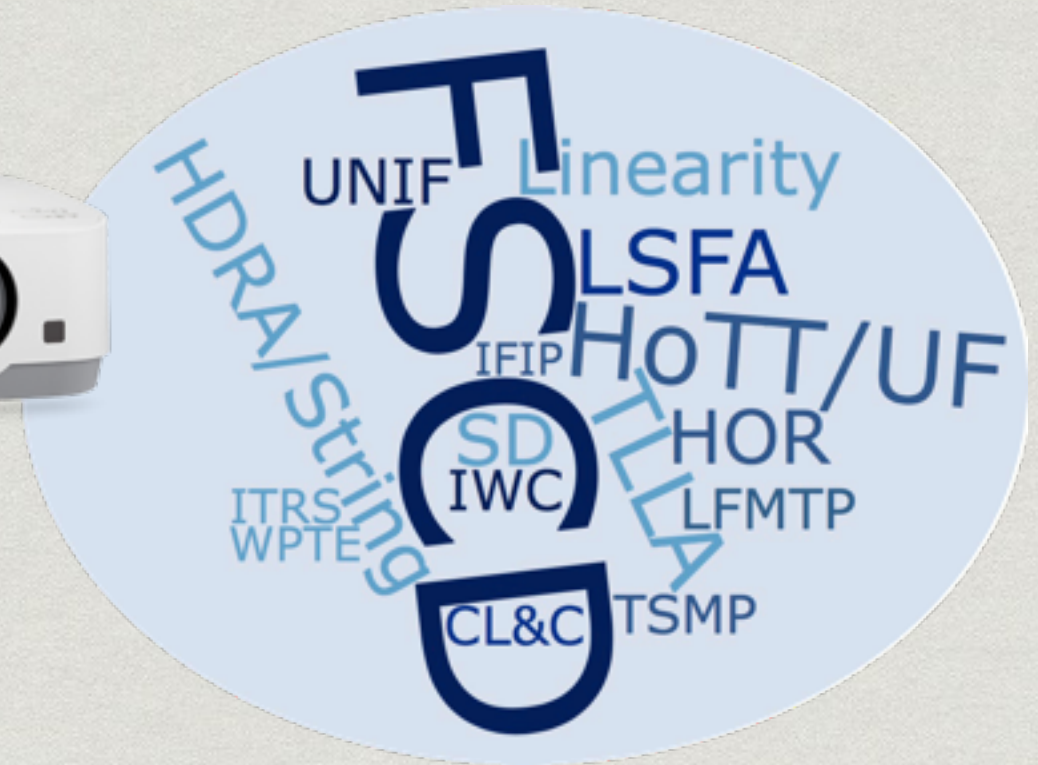


Accommodation

- * **Hotels**
- * **B&B**
- * **Airbnb**
- * **Student accommodation**
(campus Villetaneuse, 35 min.)
- * Any price and any quality!



Events



* Conferences

- * FSCD: 4 days
- * Workshops: 3 days

* Social/business events

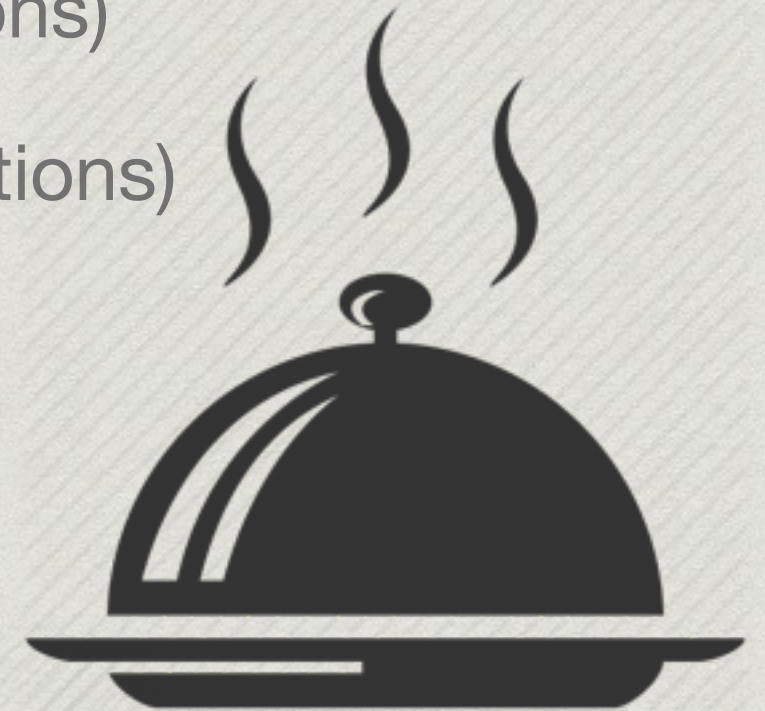
- * Reception drink
- * Social event/banquet
- * Business meeting cocktail
- * Committees meetings



Registration fees



- * Keep registration fees as low as possible
 - * **FSCD: 320-360 €** (less than previous editions)
 - * **Workshops: 50 € per day** (as previous editions)
- * Include:
 - * **Lunches and coffee breaks**
 - * **Social event/banquet**
 - * **Reception drink**
 - * **Business meeting cocktail**
 - * **Participant pack**





Budget: revenue

FSCD	80/90 p.		105/120 p.		145/150 p.	
Registrations (320 €/p.)	€	25 600	€	33 600	€	46 400
Subventions	€	8 500	€	8 500	€	8 500
Budget	€	34 100	€	42 100	€	54 900

Workshops	50 p./day		90 p./day	
Registrations (50 €/p./day)	€	7 500	€	13 500
Subventions	€	1 500	€	1 500
Budget	€	9 000	€	15 000

- * Estimated with **320 €/p. FSCD** reg. fee and **50 €/p./day WS** reg. fee
- * Sponsors: **CNRS (5000 €), Paris 13 (3000 €), others (2000 €).**

Budget: expenses



Expenses	Pessimistic	Optimistic	Very Optimistic
Budget	€ 43 100	€ 55 600	€ 69 900
FSCD Invited speakers	€ 6 200	€ 6 200	€ 6 200
Lunches/coffee breaks	€ 16 000	€ 24 000	€ 27 500
Social events	€ 8 000	€ 11 300	€ 14 500
Publicity and proceedings	€ 4 000	€ 4 000	€ 4 000
Other	€ 4 000	€ 4 500	€ 4 800
Awards/Grants/WS subventions	€ 4 900	€ 5 600	€ 12 900

- * More participants (and additional sponsors) increase budget for
 - * awards
 - * student grants
 - * subventions for workshop (invited speakers, ...)

FSCD Paris 2019

- * We are open to propositions
 - * space for co-location
(to be seen further)
 - * additional related events
 - * posters
 - * student sessions
 - * demo sessions

Let us meet in Paris in July 2019!

